

Product information

Racer is a classic stretch knit product with a smooth macro cellular construction designed for use on vertical surfaces. Racer has multi-directional stretch for excellent upholsterability and offers a balanced colour palette of neutrals through to brights.

Contact	
UK Head Office:	+44 (0)1924 490491
Germany:	+49 7031 60 84 30
Scandinavia:	+45 32 55 20 01
France/Benelux:	+32 56 227 266
USA:	+1 616 288 0655
China:	+86 (0) 21 6133 1812

www.camirafabrics.com



Technical information

UK

Composition
100% Polyester

Width
170cm minimum

Weight
305g/m2 ±5% (518g/lin.m ±5%)

Flammability
BS 476 Part 7 Class 1
Note: Flammability performance is dependent on components used.

Light Fastness
5 (ISO 105 - B02:2013)

Fastness to Rubbing
Wet: 4, Dry: 4 (ISO 105 - X12:2002)

Cleaning
Vacuum regularly. Wipe clean with a damp cloth or shampoo using proprietary upholstery shampoo.

Please note that seam performance is dependent on seam construction and needle and thread type. We recommend that appropriate sewing advice be taken.

Note: Batch to batch variations in shade may occur within commercial tolerances. We reserve the right to alter technical specifications without notice. The Unregistered Design Rights and the Copyright in all designs are the exclusive property of Camira Fabrics Limited.

D

Zusammensetzung
100% Polyester

Breite
170cm nutzbare Breite

Gewicht
305g/m2 ±5% (518g/lfd.M ±5%)

Feuersicherung
BS 476 Part 7 Class 1
Bemerkung: Schwerentflammbarkeit hängt von verwendetem Komponenten ab.

Lichtechtheit
5 (ISO 105 - B02:2013)

Reibechtheit
Nass: 4, Trocken: 4 (ISO 105 - X12:2002)

Reinigung
Regelmässig staubsaugen. Dazu mit einem feuchten Tuch abwischen, oder mit einem speziellen Polsterschaum behandeln.

Eine optimale Nahtausreissfestigkeit hängt von der Nahtfahne, der verwendeten Nadel und dem Näh-Garn ab. Wir empfehlen daher Nähversuche durchzuführen.

Wichtig: Handelsübliche Farbabweichungen können auftreten und berechtigen nicht zur Reklamation. Wir behalten uns die Änderung technischer Spezifikationen vor. Die registrierten und nicht registrierten Urheberrechte der Dessinierungen sind ausschliessliches Eigentum der Camira Fabrics Limited.

F

Composition
100% Polyester

Largeur
170cm minimum

Poids
305g/m2 ±5% (518g/m.l ±5%)

Flammabilité
BS 476 Part 7 Class 1
Notez: Réaction au feu dépend du composite utilisé.

Solidité à la lumière
5 (ISO 105 - B02:2013)

Solidité au Frottement
Mouillé: 4, Sec: 4 (ISO 105 - X12:2002)

Nettoyage
Aspirer régulièrement. Essuyer avec une étoffe humide ou nettoyer à l'aide d'un produit approprié pour tissus d'ameublement.

Veillez noter que la performance du joint dépend de sa construction ainsi que de l'aiguille et du type de fil utilisés.

Remarque: une variation de couleurs peut provenir (commerciallement tolérable). Nous réservons le droit de changer les spécifications techniques sans préavis. Les Droits de Conception non-enregistrés et les droits d'auteur de tous les motifs sont la propriété exclusives de Camira Fabrics Limited.

ES

Composición
100% Poliéster

Ancho
170cm mínimo

Peso
305g/m2 ±5% (518g/lin.m ±5%)

Inflamabilidad
BS 476 Part 7 Class 1
Condiciones ignífugas depende de los componentes utilizados.

Solidez a la luz
5 (ISO 105 - B02:2013)

Solidez al rozamiento
Húmedo: 4, Seco: 4 (ISO 105 - X12:2002)

Limpieza
Limpiar con aspiradora frecuentemente. Bien lavar con un paño húmedo o con un champú apropiado para tapicería.

Tenga en cuenta que el rendimiento de la costura depende de la construcción de la costura, además de la aguja y del tipo de rosca. Le recomendamos que se aconsejen para coser la costura.

Nota: las variaciones de lote a lote en la sombra se puede producir dentro de tolerancias comerciales. Nos reservamos el derecho a efectuar modificaciones técnicas sin previo aviso. Los derechos sobre los diseños no registrados y los derechos de autor en todos los diseños son propiedad exclusiva de Camira Fabrics Limited.

camira

style with substance

www.camirafabrics.com

Racer



Panels



Year guarantee

Note:

• Highlighted shades are available from stock. Other colourways are available in 10 - 15 working days.

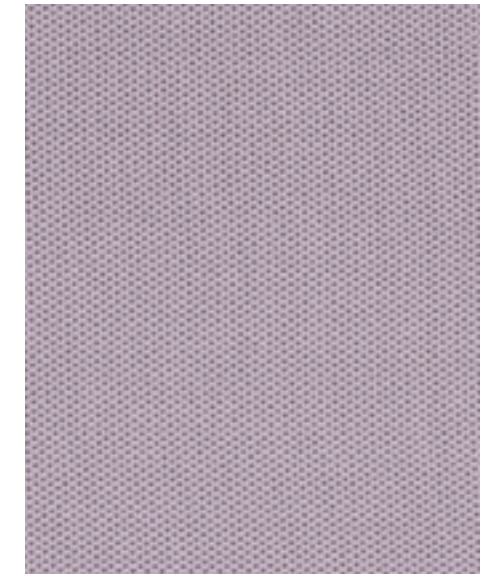
Photographic fabric scans are not colour accurate. Always request actual fabric samples before ordering.



Dart
NU044



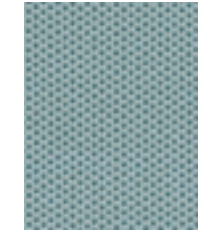
Medal
NU045



Ribbon
NU047



Dash
NU048



Nutrition
NU039



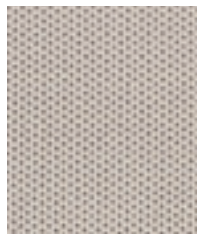
Plunge
NU016



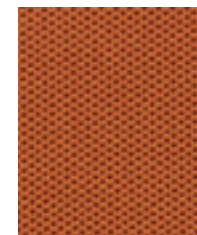
Energy
NU026



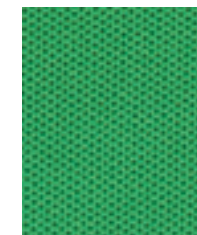
Pace
NU005



Gain
NU046



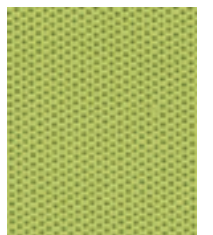
Track
NU007



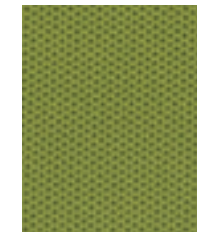
Bolt
NU022



Victory
NU032



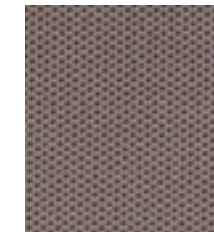
Silver
NU028



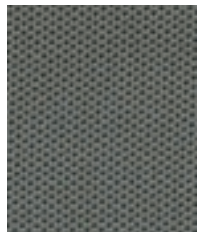
Train
NU027



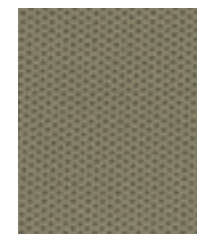
Focus
NU037



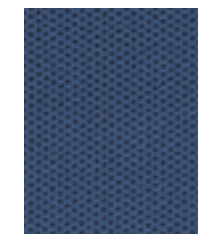
Baton
NU003



Block
NU029



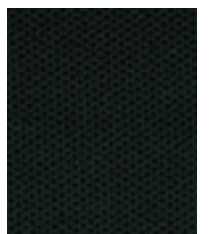
Stride
NU023



Line
NU033



Challenger
NU021



Chase
NU004